

Timeline

[Video Tutorial](#)

Introduction



New TIMELINE - a view on flights, maintenance and reservations

Timeline view allows OPS department to quickly answer the question **“what is happening with the fleet right now?”**. It is particularly useful for flight-watching.

Go to a section **OPS > Timeline** and all flights are displayed as green belts. **Ferry** flight appear in lighter shade of green. On the edge of each belt you can see the checklist-dot. Hover the mouse over it to see all items of the checklist. If you hover the mouse over the belt itself, Leon will show details of the trip: flight number, schedule, block time, PAX, Trip number, Crew, Quotation, Created by (name of the person who created the flight & exact date/time), Tags, Ops & Sales notes (if inserted).

FBO's and Users having access to more than one operator can see all the fleet for all Operators by choosing **“All *”** in Leon Menu.

You can also see **Reservations** (purple colour) or **Maintenances** added from [Scheduled Maintenance](#) section (brown colour or red if it is AOG Maintenance).

If an aircraft has an open **Hold Item List** set up, Leon will highlight its registration in yellow colour.

Click the icon  to access the filter with available options such as:

- **Show on Timeline** - Active only (Leon will show tails with assigned flights in the selected period of time), Crew warnings, Rotation prognosis, Flight pairings (legs of the same trip, on the same aircraft, will be connected with the black line).
- **Colours** - Aircraft colours (tail's colour will get displayed next to aircraft registration), Dim ferry legs (ferry legs will be displayed in a lighter shade of green).
- **Markers** - a possibility of adding extra lines in the Timeline view which will allow you to mark the events (timeframes) that have to be done before or after the flight. The lines are set to follow the green 'NOW' line.


If there is **airport discontinuity** between airport A and B - a red line will highlight ADEP without continuity with ADES of the last flight.

If any crew member has any FTL violation, a tag  will appear next to that flight. Similar situation with  tag - it will show if a crew member designated to the flight will have any expired or inactive endorsement.

Right click of the mouse on the flight or an option strip will open a window with access to **flight**

documents as well as **Show crew**, **Show schedule**, and **Notify Crew** functions. This works in exactly the same way as in Calendar and Table sections. CTRL + right click of the mouse on chosen sectors will allow you to print document for these sectors.

Focusing on a selected flight

If you select a flight (by clicking on the belt) and then click on the icon  placed in the right-hand filter (top-right corner) - Leon will focus on that flight and will show it in the center of the screen.

Even if you change the view i.e. from 5 days to 12 hours - Leon remembers that the selected flight should still be in the center of the screen. The same applies when you scroll with the page (either to the left or to the right) - if you click on the eye-icon, Leon will bring that flight back to the center of the screen.

Flight Support Companies will have the the Operator Code displayed below the Aircraft registration. The colour of the background is set in [Operator Colours](#) section.



TIMELINE is being refreshed automatically every 2 minutes

Flight watch

GLE1 G-LEON 23:00z EPWA - EGGW 01:20z

CHECKLIST

FW

JL

CTOT

ETD

23:00

01 FEB

BLOFF

T/O

23:38

01 FEB

EET

ETA

01:58

02 FEB

LDG

BLON

02:01

02 FEB

Pax

DIV

Cargo

Delay

15/0030

Notes

PAX - late arrival

SEND MVT

Flight Watch data entrance panel

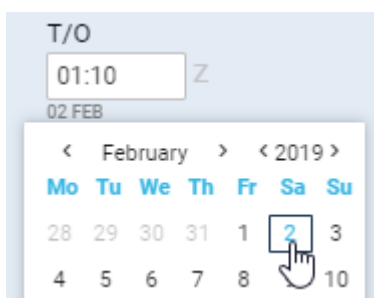
By clicking on FW & JL column Leon opens the tab in the right-hand side filter. If there is no Journey Log added Leon opens FW tab. If there is a Journey Log added (even if it is partly filled in) Leon opens JL tab.

FW contains several fields where you can input details such as:

- **CTOT** - calculated takeoff time - if it is the only detail added to FW in Flights List Leon shows **S**. On the flight-times belt you can see inserted CTOT - Leon moves the belt accordingly,

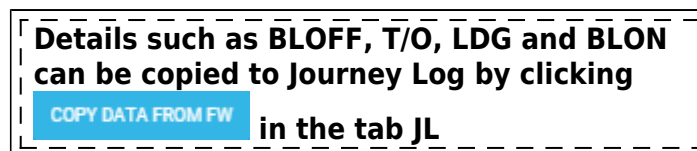
depending on the CTOT value. Once ETD or BLOFF is added, the red CTOT indication disappears.

- **ETD** - estimated time of departure - if added to FW Leon shows **D**.
- **BLOFF** - block off time - if added to FW Leon shows **A**.
- **T/O** - take off time - if added to FW Leon shows **A**.
- **EET** - estimated endroute time (T/O + EET should equal ETA. i.e. T/O 12:00, EET 02:30, so ETA should be 14:30).
- **ETA** - estimated time of arrival.
- **LDG** - landing - if added to FW Leon shows **+**.
- **BLON** - block on time - if added to FW Leon shows **+**.
- **Pax** - number of passengers.
- **DIV** - diversion - insert the code of the airport to which the flight was diverted.
- **Cargo** - cargo weight.
- **Delay** - delay code and the delay time can be inserted (the format: code/delay i.e. 14/0010 where 0010 means 00:10 minutes) - if added to FW Leon shows **D**.
- **Notes** - add notes which can be read by OPS or crew.

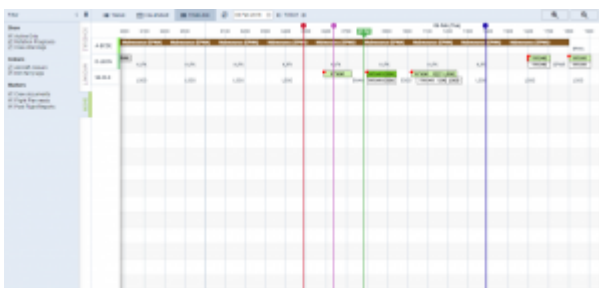


Date input in the Flight Watch

Date of the time input can be selected for each individual box apart from EET. As soon as you click inside the applicable box Leon will display the date underneath the box in the “ddMMM” format. If there is a need to **change** the date, simply click on the date displayed below the box and choose the new date from the calendar.



Markers in Timeline view



Timeline view with selected markers

We have created a possibility of adding extra lines in the Timeline view which will allow you to mark the events (timeframes) that have to be done before or after the flight. The lines are set to follow the green 'NOW' line.

The first step in this process is to create a line and name it. You need to go to 'General settings' and in 'General settings' section, you will find a 'Timeline additional markers' option. Clicking on this option will open a window where you can choose the name of the line, where it should show vs 'NOW' (h-hours, m-minutes, d-days, etc), and the colour of the line. The line displaying before 'NOW' should be added with a minus sign, e.g. -1m for the line displaying 1 month prior to the green 'NOW' line.

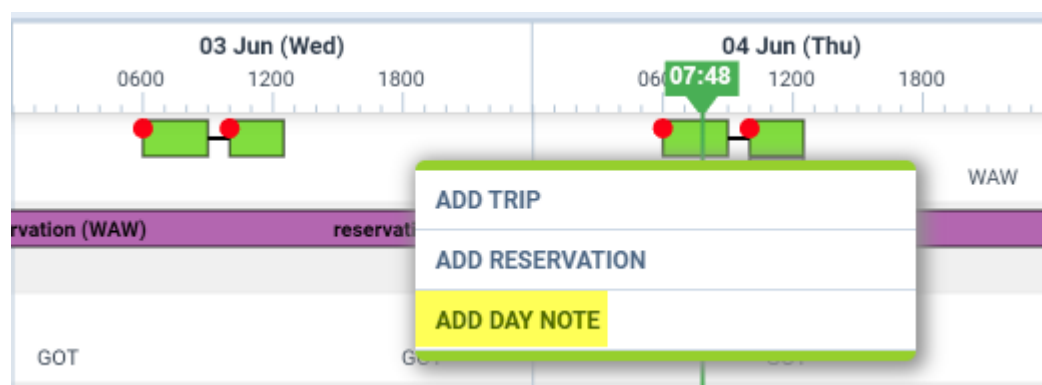
| Label | Time before/after? | Color |
|---------------------|---------------------|--------|
| Crew documents | -1 hours 30 minutes | BF53BE |
| Flight Plan ready | -3 hours | CD1B36 |
| Post Flight Reports | 6 hours | 2010AA |

Once you have the definitions created, Leon will add these options in the TIMELINE filter in SHOW section. Depending on whether the section is ticked or not, the lines will get displayed in the timeline view. These filter markers will only display upon relogging to Leon.

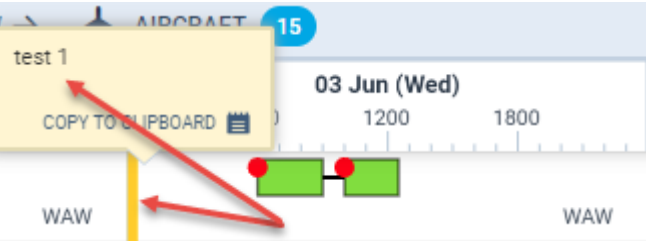
Adding Day Notes

It is possible to add **Day Notes** in a section OPS Timeline. It works in a similar way to the one in a section OPS Calendar.

Right-clicking on a given day in a Timeline view will generate a pop-up window where a Day Note can be selected.



Once the Day Note is added it will appear as a **yellow vertical line**. Hovering over the line will trigger a tooltip with the note text. The added Day Note will also show in OPS Calendar panel.



Rotation

In a section OPS, tab FLIGHT, we have added a field **Rotation - minimum time** on the ground needed for unloading & loading the aircraft as well as fueling and cleaning, etc...

The first step to enable this functionality is defining a **Minimum Ground Time** in a section Settings > Fleet. Right now that default time is set as 01:00 (which you can over-write to appropriate value).

Once it's defined, when you add a trip (i.e. 3 legs), in a section **TIMELINE** Leon will show legs where all legs - apart from the first one - have already added flight-times belts. They remain with scheduled times until Flight Watch details are filled in (see example below).



The logic behind this option is to monitor if the current leg is delayed and if time between landing and BLOFF of the next leg exceeds Rotation time. If so, Leon will delay next legs by that difference. Below you can find examples describing possible situations.

- **BLOFF filled in**

The screenshot below shows a case where BLOFF is 09:16 where scheduled STD of the 2nd leg is 12:10. That means that the rotation time defined as 01:00 would be less than this value. That is why Leon “pushed” 2nd leg's flight time bar to 12:16.



- **EET & ETA filled in**

By inserting a value EET (Estimated Endroute Time) Leon automatically calculates ETA. The screenshot below shows a case where EET is 02:00 hence Leon “pushed” 2nd leg's flight time bar to 12:26 taking also into consideration Taxi In time at the GVA airport (which is defined as 00:10). As you can notice, Leon also pushed 3rd leg's flight time bar by 00:01 to 16:16 because the rotation time would not be 01:00.



To turn the rotation functionality off untick a checkbox **Rotation Prognosis** in the left-hand filter, tab Show

From:
<https://wiki.leonsoftware.com/> - Leonsoftware Wiki

Permanent link:
<https://wiki.leonsoftware.com/leon/timeline?rev=1591434596>

Last update: 2020/06/06 09:09

