

iPhone

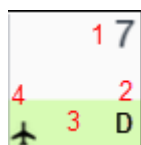
Downloading & Logging in

Before you can start using Leon on your iPhone, you need to install it from **App Store**. Once it's done, click on Leon's logo so that the logging-in page can show up.



Viewing duties

Select appropriate period of time and by clicking on the particular square you can view your duty.



The meaning of markings on each calendar day are as follows:

- 1 - day number.**
- 2 - duty symbol.** This will appear exactly in the same way as in the 'Crew Duty' roster view in Leon.
- 3 - the colour of the strip reflects the kind of **fleet activity** on that day - it's top priority information.** If there is any single **confirmed flight** for selected fleet, the strip will be **light yellow**. If there are **no confirmed flights** but at least one **option** for a flight, the strip will be **light green**. The same logic applies to the following colours: maintenance not confirmed (light red), confirmed (red), aircraft reserved by sales (orange), aircraft blocked as no crew available (purple). All the colours are exactly the same as in Leon 'Planned Flights' view.
- 4 - aircraft symbol** - appears if the logged-in user is scheduled as a crew member for any flight on

that day, according to the filter settings.

Below the calendar there will be displayed duty details, such as:

- flight number
- schedule times
- destination airport & arrival airport codes
- aircraft registration
- crew codes
- number of passengers

Flights performed more than **6** weeks from the present day are **not available** in the mobile application

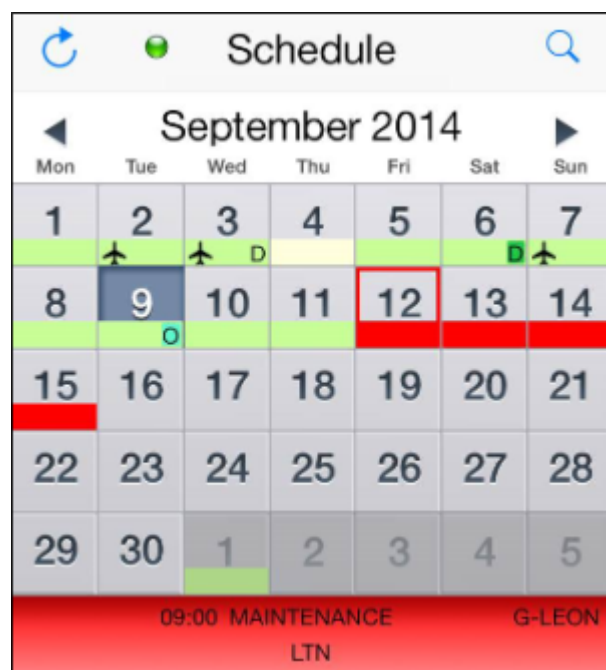


Apart from viewing flights, you can also see details of all kinds of **aircraft reservations**.

Below is an example of a **scheduled maintenance** assigned to a given aircraft. Maintenance is displayed in red, so is the belt below the calendar.

Details you can see contain:

- scheduled maintenance times
- airport code where maintenance will take place
- aircraft registration



Legs Info

To view '**Legs Info**' details click on the particular flight below the calendar. A new window will show up with available legs info sections (handling, ops, pax, etc.).

Handling	
LAS STA 21:51	CNF
Ops	
LAS slot STA 21:51	CNF
A/C Performance	YES
Pax	
Pax list (6)	>
PAX Transport LTN	RQS
PAX Transport LAS	RQS
Catering	CNF

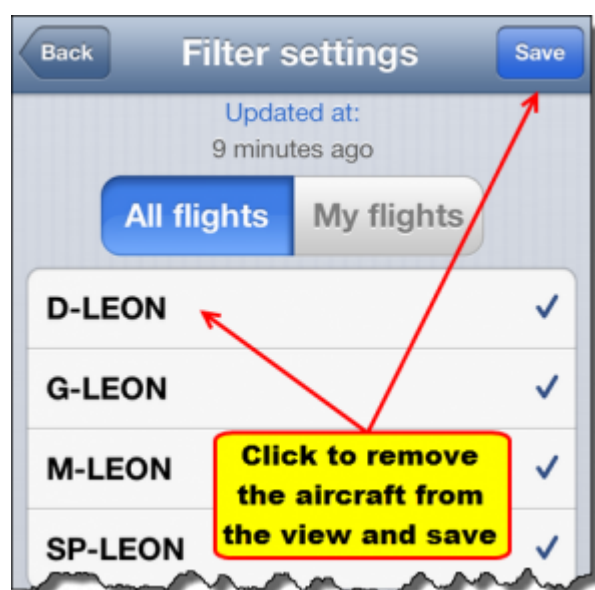
To check some section's details that have been added by Ops department as text in 'Legs Info', simply click on it and the information will appear.

Menu

By clicking on the loupe-icon you will get a **Menu** window. The window is divided into 2 sections:

- **All flights** - the view on all flights, including maintenance. Click on the particular aircraft registration to remove (when unticked) its flights from the view - click 'save' once all changes are done.
- **My flights** - a preview on only those duties to which you have been assigned, including days off, vacation, office duties, etc.

Also from this window you can go to '**Help**' section, you can **reset** your data and **log out**.



[< Introduction](#)

[iPad >](#)

From:

<https://wiki.leonsoftware.com/> - **Leonsoftware Wiki**

Permanent link:

<https://wiki.leonsoftware.com/mobile/iphone?rev=1376920926>

Last update: **2016/08/30 13:06**

