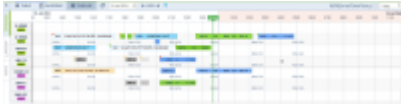


Minor changes to flight time belts colours in Timeline



Flight times belts colours in the new Timeline

We have slightly amended flight belts colours in the new timeline. Now they present as follows:

- **Green** - planned flight, no data in the FW.
- **White** - CTOT, EDT or BLOFF (without T/O) filled in when the aircraft is still on ground.
- **Light Blue** - airborne flight.
- **Orange** - terminated flight without Journey Log filled in.
- **Grey** - full flight with Journey Log filled in.

From:

<https://wiki.leonsoftware.com/> - **Leonsoftware Wiki**

Permanent link:

<https://wiki.leonsoftware.com/updates/new-timeline-minor-changes-in-flight-time-belts-colours?rev=1479809522>

Last update: **2016/11/22 10:12**

