

SSIM - files auto-sending

It is now possible to set up an **auto-sending** of SSIM files to DCS and/or PSS after each schedule change of the flight, in a panel **SCHED**.

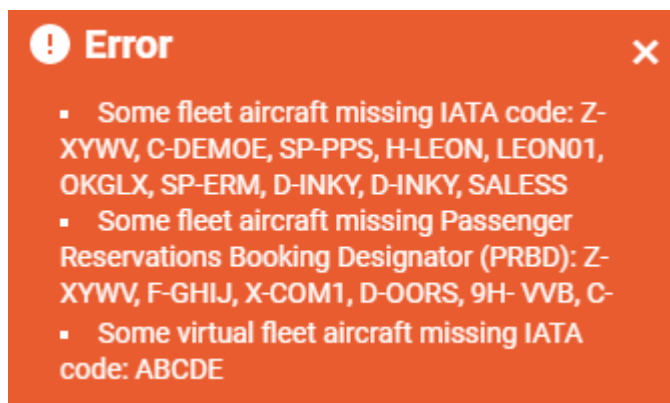
In a section SSIM of Settings panel there are 2 checkboxes: 'Send DCS automatically' & 'Send PSS automatically', which need to be marked for auto-sending of files.

DCS email	<input type="text" value="dcs@123.aero"/>
Send DCS automatically	<input checked="" type="checkbox"/>
PSS email	<input type="text" value="pss@123.aero"/>
Send PSS automatically	<input checked="" type="checkbox"/>
From email	<input type="text" value="ops@one.aero"/>

There are **details** which need to be added to Leon to make it work:

- **Operator IATA code** - defined in General Settings.
- **Aircraft IATA code** - defined by Leon Support Team.
- **Virtual aircraft IATA code** - defined by Leon Support Team.
- **Passenger Reservations Booking Designator (PRBD)** - defined in an aircraft profile, tab Sales.

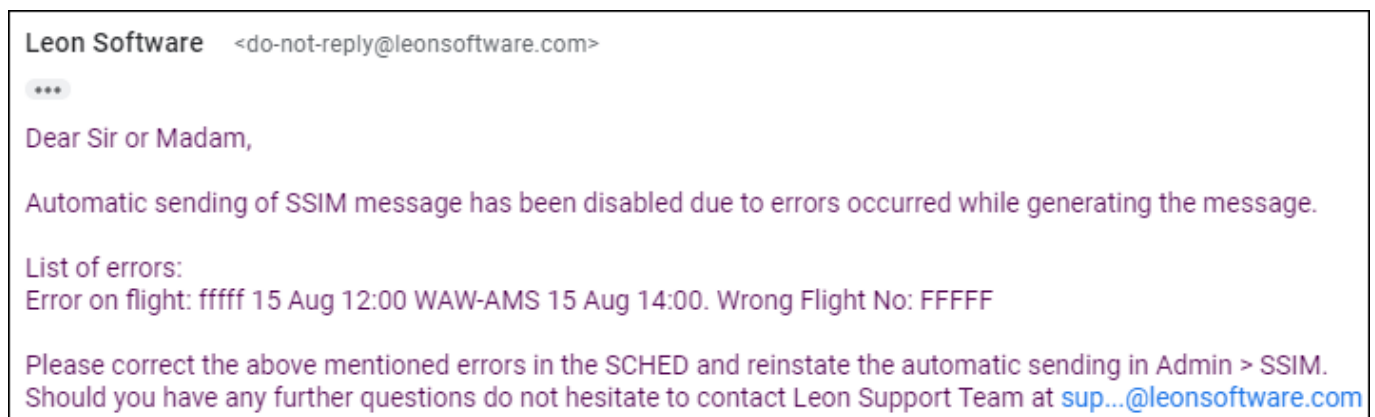
If any of the above details are missing, Leon will show a warning:



If all is set up correctly and the schedule was changed in a section SCHED (aircraft, STD, STA, ADEP/ADES), Leon will automatically send updated SSIM file to DCS and/or PSS - Leon will also send an email with the attached SSIM file, to email address inserted in SSIM configuration panel ('From email').



If something has not been configured correctly, Leon will send an email with the explanation, what exactly needs to be corrected (see example below).



From:
<https://wiki.leonsoftware.com/> - **Leonsoftware Wiki**

Permanent link:
<https://wiki.leonsoftware.com/updates/ssim-an-option-of-auto-sending-ssim-files-has-been-added?rev=1597405436>

Last update: **2020/08/14 11:43**

